

# SIGMA DP1

*Merrill*

THE SIGMA DP1 MERRILL GENERATION



*DSLR image quality  
goes compact with  
a next-generation high-fidelity sensor.*

*In the DP1 Merrill, Sigma takes  
photography and cameras  
into new realms.*

Inspired modern craftsmanship  
Sensor designed in California  
Camera made in Japan







## A REVOLUTIONARY DIFFERENCE

The Sigma DP Series. A ground-breaking concept: Compact cameras with the full performance of a digital SLR. Sized perfectly to go everywhere you do. Stunning image quality that maintains its integrity when enlarged. An all-new genre of compact cameras delivering photographic excellence that exceeds all expectations given its very compact size. Praised and embraced by demanding photographers around the globe. Designed to inspire a fresh approach to creative photography. Until the DP Series there was no such thing as a DSLR-spec compact. That it heralded the birth of a new category is testimony to its impact. Today's high-performance compacts all follow in its footsteps.

It was not Sigma's intention to do anything radical. Our goal has always been to achieve a purer, more honest rendition of the world we see.

After all, truth is the essence of photography. But the pursuit of this fundamental functionality resulted in technology capable of capturing every nuance of light. In a camera that answers the call of photographic artistry.

Next came Sigma's flagship digital SLR: The Sigma SD1 Merrill. Bringing subjects to life with a three-dimensional feel that mirrors the scene's original ambience. The DP Merrill Series inherits the same philosophy as our flagship camera, the SD1 Merrill, of capturing photographic truth. It achieves this by packing all the picture quality and camera technology of the SD1 Merrill into compact dimensions.

Discover the cameras that open up new possibilities for image quality and photographic expression: The DP Merrill Series.







# SIGMA DP1 *Merrill*

THE SIGMA DP1 MERRILL GENERATION

**Connect your eyes to your heart.  
SIGMA DP1 Merrill**



Can a camera change your life?

In March 2008 the Sigma DP1 was born. It was unique. And it created a new category of compact cameras with large sensors and precision optics on a par with DSLRs.

With compact take-everywhere convenience wedded to genuine photographic excellence, the Sigma DP Series was designed for creative artists.

The Sigma DP1 Merrill inherits the spirit of the DP Series, delivering the imaging performance of Sigma's flagship DSLR, the SD1 Merrill, in a compact package.

Sigma's full color capture system creates clear, sharp images with a uniquely three-dimensional feel.

With its much higher pixel count, the larger 46MP new-generation sensor brings you breathtaking definition, richly graduated tonality and true-to-life texture. Laudatory reviews of

the Sigma DP2 Merrill, the DP1 Merrill's sister model, testify to the overwhelmingly honest beauty of this sensor's image quality.

The unique identity of the DP1 Merrill is defined by its specially developed wide-angle lens (equivalent to a 28mm lens on a 35mm SLR), a masterpiece of optical expertise.

Dramatic wide-angle shots with dynamic perspective show off the impeccable accuracy of this lens, which has the versatility to render vast landscapes as effortlessly as candid portraiture.

It's a remarkable combination: the ultra-high image quality of a medium-format sensor in an ultra-convenient compact format. Here is a camera that goes beyond mere high resolution to explore new horizons of artistic expression.

Integrated lens-camera construction minimizes vibration arising in lens or shutter mechanisms, while the contrast-

detection autofocus system raises focusing accuracy. You can depend on the DP1 to perform at your command with quiet, positive precision.

An ideal sensor matched with an ideal lens. This is performance optimized to a rare degree.

It's a camera that will constantly remind you of why you take photographs in the first place. A camera that lets you see and frame your world in fresh ways.

The Sigma DP1 Merrill is a camera for serious photographers — and for everyone who wants to experience the creative thrill of serious photography.

It will stimulate you and challenge you to take artistic leaps.

The Sigma DP1 Merrill.

A small camera for those seeking a revolutionary difference in their photography.



I had been hearing  
a lot of talk about a ranch.  
People said it was a special kind of ranch,  
where sustainability wasn't  
just a buzzword, but a way of life.

If that had been the end of it,  
I might never have gone there.  
But I also heard  
the ranch was run by  
real cowboys ....

It was that magic word,  
"cowboys," that got me.

Cowboys? In this day and age?  
Weren't they just a Hollywood fiction,  
something that vanished long ago?

People said the ranch was in Oregon,  
where I was staying at the time.

So I decided to check it out.

Not wanting to drag a lot of gear around,  
I just grabbed my Sigma DP1 Merrill  
and headed for the high country.

SIGMA DP1 Merrill Meets

# OREGON

A place beyond space and time

I pulled out my road map and looked  
for some indication of the ranch's  
location. There was none. So I kept on,  
driving mile after mile without seeing  
a soul, stopping occasionally just to  
capture the emptiness around me.  
With its dramatically wide 19mm angle  
of view, the DP1 Merrill feasted on  
the limitless landscape, its big sensor  
drinking in the light ... the clear air ...  
and the ever-changing sky.





**A TIMELESS SONG** Off in the distance, I saw some low buildings — could it be a town? I turned off the road to ask directions. But the town was soundless and empty, its inhabitants long gone. Only a rusting automobile waited to greet me. Pointing the lens of my Sigma DP1 Merrill at it, I captured the light of its timeless song in a final tribute to its long journey. As I reflect on my own journey, I realize how often we overlook the beauty around us. Even land that at first appears parched and lifeless can be rich in beauty that nourishes those who live on it. If we pay attention, the passage of time is like an artist's brush, painting each moment in new colors. With each image the Sigma DP1 Merrill captures, I understand more fully what "beauty" really means.





## TACITURN PRIDE

When I learned that just six people worked this 30,000-acre property, I was at first incredulous. But they were proud and taciturn people, and didn't waste time with idle talk. The land they worked was a vast patchwork of pasture and grain, and looking to the horizon, the only living things I could see were sheep. The people truly loved the land they worked. "This is a wonderful place,"

they said, and their clear, unwavering gaze reinforced the sincerity of their words. In that moment, I began to understand how people can look at the same sights, and see totally different worlds. Though unrelated by blood, the people of the ranch obviously shared a common bond. They seemed to always be thinking of ways to make the work easier for others. The pride they took in their work was soundless and unspoken,

but I could tell it was deeply shared, passed down from generation to generation.

With an angle of view wide enough to capture its vast scale, and a sensor big enough to render every detail, the Sigma DP1 Merrill was the perfect camera to photograph this proud heritage.









### A COWBOY'S ARMOR

I stood watching the men get ready to tend the cattle, my eyes drawn to the fascinating variety of their well-worn gear. From their shirts and coats to their hats, gloves and boots — every item was a perfect fit, moving easily as they moved. Saddling their horses, they adjusted bridles and stirrups with a sure, practiced economy. The focused attention and absence of any wasted movement reminded me of warriors donning their armor before battle.

Tools and farm implements were hung on the wall of the stable, framing the door to an adjoining room. When I asked where it led, I was invited to take a look. As I stepped into the room, I couldn't suppress an exclamation of surprise. It was filled with all the saddles, harnesses, and other gear accumulated over a century of ranching history. Through the dust, each item glowed with a rich patina of age, like the shining armor of a long-ago warrior. In this dimly lit room filled with dramatic imagery, the edge-to-edge sharpness of the Sigma DPI Merrill's bright, wide-angle lens was exactly what I needed.



**LIVING TOGETHER** One of the many things that surprised me about the ranch was how clean it was. Livestock tend to smell, and even in this arid, high-altitude climate, I had expected the ranch to be fairly odorless. But it was not so. During my entire stay, I never once experienced the pungent smells I had anticipated.

The key, I was told, is simple — just keep the animals healthy, and clean up after them promptly and thoroughly. But it isn't an easy task when you're caring for so many animals, and I was impressed with the degree of personal attention the ranchers managed to give each one. Perhaps it was because they were treated more like family members than livestock, but I noticed the animals on the ranch always approached me with more curiosity than caution.

Here, the rancher's way of life has been handed down for generations. It is practiced with a sense of respect for the past, and of responsibility to the future. Everyone — human and animal — plays a vital role. In the end, I think it is this unity of purpose that makes cowboys and cowgirls such enduring heroes to us all.











America is a big country, and the people who settled it were tough and taciturn, determined to turn their dreams into reality. They had every right to be proud. Although I thought I understood them fairly well, my short trip to the high desert showed me I had a lot to learn. It was as though I had stirred some ancient memory, and entered a dream-like world of wilderness landscapes and legendary heroes.

From time to time, I was almost overwhelmed by powerful emotion. It was a nostalgia for all the important lessons we have forgotten, and for the essential values from which we have strayed. The sense of responsibility to the future that enabled men and women of the past to love nature even when it treated them harshly, to put down roots and till the soil, living and working together for generation after generation.

Standing amid fields of golden grain, I knew that it had been the right time to make this journey, and to rediscover the magic of the high desert and its rugged inhabitants, thriving under the clear Oregon sky.

.....  
To see more photos of Oregon,  
visit the Sigma DP1 Merrill website at  
[www.sigma-dp.com](http://www.sigma-dp.com)



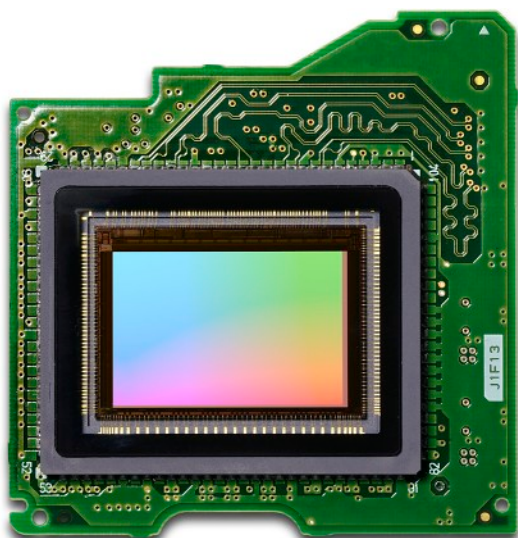




## Images so real, they're alive.

Texture that's indescribably lifelike.  
Rich tonal gradation.  
Honestly natural image quality rendered by  
our new-generation 46-megapixel sensor.

*Faithfully reproduce  
the scenes that move you.  
Capture unanticipated events  
in vivid detail.  
Experience the magic of  
images coming to life.  
Say hello to the fresh future  
of photography.*



**New-generation Foveon sensor  
for 'emotional image quality'  
with a dramatically boosted pixel count.**

The Sigma DP1 Merrill is equipped with the same 46MP Foveon X3 Direct Image Sensor as in the SD1 Merrill DSLR.

Compared to the previous Foveon sensor, this new generation has an expanded area matching the APS-C format (50% greater equivalent focal length). It also has a narrower pixel pitch, thereby dramatically raising the total pixel count.

In fact, we have achieved an extraordinary 46MP (4,800 x 3,200 x 3) effective pixels, triple the previous number.

This provides luminance resolution equivalent to that of a 30MP CFA sensor as measured on the standard B&W resolution chart used in conventional digital camera resolution testing.

**Medium-format-grade sensor  
redefines image quality with its rich  
and wide range of expression**

With its much higher pixel count, the new Foveon X3 Direct Image Sensor realizes medium-format image generation capability, while retaining the "emotional image quality" unique to our full color capture system.

Sigma's Dual TRUE II image processing engine was specially developed to process vast volumes of data at blazing speed, generating richly detailed images of amazing depth, which can be enjoyed even in large print formats.

Eye-opening sharpness. Natural edge definition. Finely graduated tonality ... Here is a camera that redefines "high image quality" and invites you into a fresh dimension of visual experience.

---

### The 'Merrill' name

Dick Merrill (1949-2008), co-developer of the revolutionary Foveon image capture system, was both a brilliant engineer and talented photographer. As an expression of Sigma's passion for photography and in honor of Dick Merrill's ability to realize artistic ideals through technology, we have named this new-generation sensor the "Merrill."



## Probe new depths and breadths of expression.

Unique sensor technology.  
Foveon X3 full-color capture system.

*Express precisely what you see, think and feel.  
The texture of light. The ambience of reality.  
With a sensor born of the unwavering quest for pure,  
unadulterated photographic truth.*

### Technology that works just like film. Foveon X3 Direct Image Sensor.

The Foveon X3 Direct Image Sensor featured in Sigma digital cameras uses three layers of photodiodes to gather the entire red, green and blue color information of light, forming the world's one and only full color capture system. Downstream processing of color and luminance information is minimized to preserve the most delicate nuances of texture in this pioneering format.

Taking advantage of the characteristics of silicon, this image sensor absorbs different light wavelengths at different levels, using a structure similar to color film. Full RGB light information is captured at each pixel location.

This ideal system lets Sigma cameras faithfully record the actual color image coming through the lens.

Beginning with our first digital camera in 2002, all Sigma cameras have used this same sensor format. The name "Foveon" is taken from the fovea centralis, the central portion of the human retina that has the most acute vision, reflecting our pursuit of the ideal visual experience.

### Faithfully records light's pure richness without added color interpolation or low-pass filtering

The image sensor in most conventional digital cameras uses an RGB color filter array (CFA) over a monochrome sensor. Each photosite receives just one of the RGB colors, so downstream interpolation processing is required to create a full-color image.

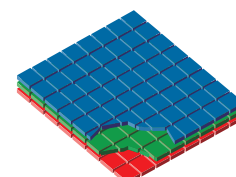
False colors (moiré) appear in this conventional system because of interference between details in the subject. An optical low-pass filter is therefore required to clean up the image, but at the expense of apparent sharpness.

In contrast, Sigma's sensor technology needs no color filter, so it doesn't sacrifice fine detail. The resulting high-definition image captures the full information focused by the lens on the sensor.

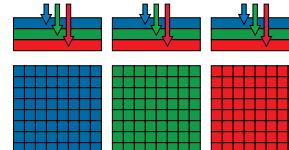
People are amazed at the almost uncanny atmospheric detail preserved by the high resolution of Sigma cameras.

The secret is simply that our unique system neither adds anything to the image nor takes anything away.

The Sigma DP1 Merrill's Foveon X3 Direct Image Sensor utilizes the characteristics of silicon to absorb shorter wavelengths (blue) near its surface and longer wavelengths (green, then red) at deeper levels. This three-layer full color capture system can record the full color information at each pixel location, enabling richly detailed, vividly colorful images, without the compromises of color interpolation required by conventional sensors.

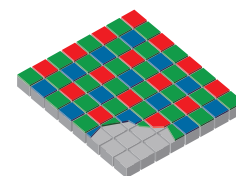


Foveon X3 Direct Image Sensor

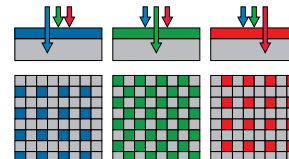


R: 100%, G: 100%, B: 100%

Full color capture system has three layers of photo detectors, enabling it to capture 100% of RGB color information directly.



Conventional color filter array sensor



R: 25%, G: 50%, B: 25%

With a conventional digital camera's sensor, 50% of the photosites are dedicated to green, and 25% each gather red and blue color information via a color filter array.









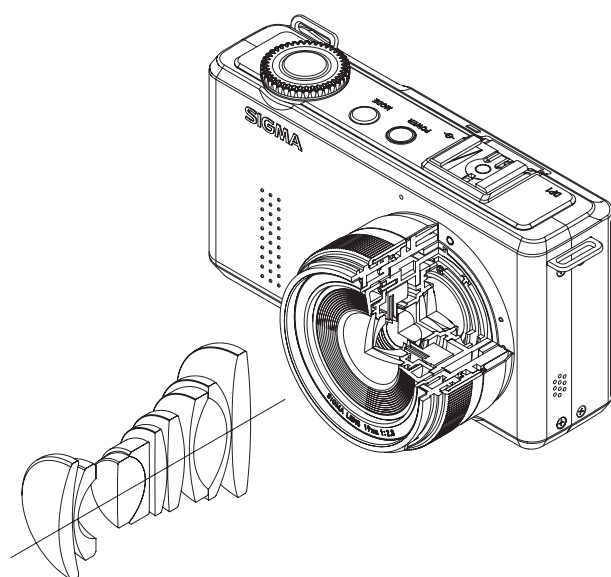


## Stunning. And stirring.

Dedicated new DP lens optimized for the new-generation sensor.

*Specially developed to dramatically expand your visual horizons.*

*Designed to render the world as sharply, clearly and vividly as possible.*



### Perfect pair: New-generation sensor and newly developed high-performance DP lens

The Sigma DP Series single-handedly triggered today's trend of fixed-lens high-end digital compact cameras. With Sigma's half century of lens making experience and expertise, the DP Series could offer specially developed lenses that won the acclaim of photography enthusiasts.

For the DP1 Merrill, we designed a new dedicated lens that is perfectly matched to the new-generation Foveon X3 Direct Image sensor with its larger APS-C area (equivalent to 50% greater focal length). The wide-angle focal length (equivalent to a

28mm lens on a 35mm SLR) of this lens creates a dynamic, dramatic sense of perspective that expands beyond what we see with the human eye. Developed to maximize the "pure image quality" of the full color capture system, this new lens renders scenes with astounding naturalness and clarity.

### A lens that delivers profoundly natural images

Advanced optical architecture and precision manufacturing combine in a lens designed to faithfully deliver light information to the sensor unsullied by aberration.

The lens on the Sigma DP1 Merrill creates consistently crisp, high-contrast images with accurately rendered ultra-fine detail. Outstanding image surface characteristics provide excellent sharpness in the plane of focus while gently transitioning to beautiful bokeh in other areas.

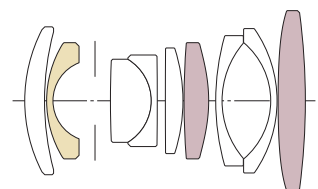
### The best lens. The best sensor. Hallmarks of Sigma, the lens expert.

The best lens and the best sensor. These are the pillars that support Sigma's photographic philosophy in action. After all, designing and manufacturing lenses is at the core of what we do best.

This new DP lens achieves excellence in every parameter of performance, from its MTF curves to distortion and bokeh. It is truly a pinnacle of the lens maker's art.

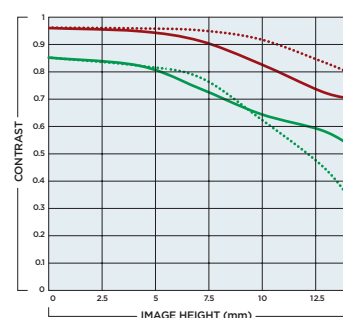
### Lens construction

The construction of the special-design lens



To maximize image quality while minimizing lens barrel length, Sigma combined one FLD glass and two glass molded aspherical lens elements with one high-refraction glass element. The result is a short lens exhibiting virtually ideal optical characteristics in a "Wide angle" focal length.

Sigma DP Lens 19mm F2.8 / MTF Chart



Spatial Frequency	Sagittal Line	Meridional Line
10 lp	—	.....
30 lp	—	.....

The MTF chart gives the results at the wide-open aperture.





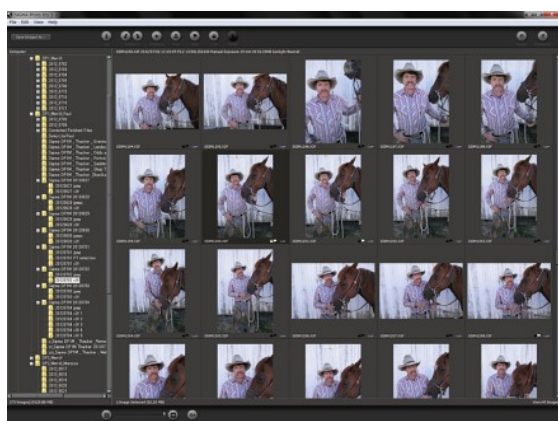


## Realize your vision.

Artistically 'develop' your photos  
with Sigma's creative software.

*Now you can give your  
creativity free rein.  
Pressing the shutter release is  
just the beginning.*

*In the digital darkroom  
you fully realize your vision.  
This is where photographic expression  
reaches its apogee.*



### **x3f RAW image format files are your digital negatives**

A photograph starts with pressing the shutter and ends with manipulating the image to reproduce what you saw.

You work with the full dynamic range, broad color spectrum and delicate gradations of shadow and light contained in the photo data file. This rich palette lets you finish the photo as you like.

We encourage you to take advantage of the x3f RAW format because it preserves the complete original image information gathered by Sigma's X3 full color capture system technology.

### **More convenient and flexible than ever: SIGMA Photo Pro**

SIGMA Photo Pro software is designed for the creative photographer who wishes to personally control the image finishing process. It allows you to "develop" the image data you shot in RAW mode.

Ever since we made our first digital camera, we have continued to refine our RAW data processing technology. The result, we believe, is the finest digital darkroom software available today. It has precisely the functions you really need — no more, no less. Even if you are new to RAW file formats, the intuitive interface makes it easy to use.

To bring out the full potential of the 46MP image data captured by the new-generation Foveon X3 Direct Image Sensor, a new transverse aberration correction function has been added. Processing speed has also been accelerated for operational convenience.

For image correction, the Adjustment Controls Palette offers seven parameters: exposure, contrast, shadows, highlights, color saturation, sharpness, and the X3 Fill Light feature.

Together with the highlight correction, noise reduction, transverse aberration correction and other parameters, these versatile tools let you craft original masterpieces of photographic art.



# SIGMA DP1

*Merrill*

THE SIGMA DP1 MERRILL GENERATION



#### Manual focus ring on lens

Lets you keep a steady grip on the camera while focusing, like using an SLR.



## Inspiration in the palm of your hand.

High-end digital SLR quality  
housed in a compact body

*A compact camera  
you can hold in one hand.  
Built to get you the shots you want  
— when you want them.*

*Speedily. Effortlessly. Repeatedly.  
True high-end performance  
that's always at the ready.*

**Designed with the same philosophy as an SLR,  
optimized in every area for exacting performance**

Along with the new-generation Foveon X3 Direct Image Sensor, virtually every aspect of the Sigma DP1 Merrill has received a thorough upgrade.

We have optimized the lenses, body and user interface to bring out the larger sensor's maximum potential. Although the sensor is larger, the body is as compact as ever.

In line with our philosophy of providing SLR-like control, we have provided this camera with a user interface that will be familiar to photographers who have handled Sigma SD series models.

Similarly, a new focusing ring on the lens lets you manually adjust focus with your left hand while keeping your right on the shutter release.





## ACCESSORIES

SIGMA DP1 Merrill Accessories

### LENS HOOD: LH1-01

The dedicated bayonet lens hood (LH1-01) can be attached to block out extraneous light.

### VIEWFINDER: VF-11

This precision-made optical view finder mounts on the camera's hot shoe. It allows framing of the image without using the LCD monitor.

### ELECTRONIC FLASH: EF-140 DG

A compact flashgun designed exclusively for the DP series and featuring a Guide Number of 14. This flashgun extends the camera's photographic possibilities with such features as fill-in flash and full-flash for night photography.





To see more information,  
visit the Sigma DP1 Merrill website at

**www.SIGMA-DP.com**

## SIGMA DP1 Merrill | PRINCIPAL SPECIFICATIONS

### IMAGE SENSOR

Format	Foveon X3® direct image sensor CMOS
Image Sensor Size	23.5 x 15.7mm
Number of Pixels	Total Pixels: 48 MP Effective Pixels: 46 MP (4,800 x 3,200 x 3)
Aspect Ratio	3:2

### LENS

Focal Length	19mm
35mm Equivalent Focal Length	Approx. 28mm
Lens F number	F2.8 - F16
Number of Diaphragm Blades	9 Blades
Lens Construction	9 Elements in 8 Groups
Shooting Range	20cm - ∞, 100cm - ∞ (LIMIT mode)
Maximum Magnification Shooting	1 : 8.4

### RECORDING SYSTEM

Storage Media	SD Card, SDHC Card, SDXC Card, Multi Media Card
File Format	Lossless compression RAW data(12-bit, High, Medium, Low), JPEG(High, Medium, Low), RAW+JPEG, Movie(AVI)

File Size	RAW	High	:	4,704 X 3,136 X 3	Approx. 45 MB
		Medium	:	3,264 X 2,176 X 3	Approx. 24 MB
		Low	:	2,336 X 1,568 X 3	Approx. 12 MB
	JPEG	High	:	Fine 4,704 X 3,136	Approx. 10 MB
			:	Normal 4,704 X 3,136	Approx. 5.6 MB
			:	Basic 4,704 X 3,136	Approx. 4.2 MB
		Medium	:	Fine 3,264 X 2,176	Approx. 5 MB
			:	Normal 3,264 X 2,176	Approx. 2.7 MB
			:	Basic 3,264 X 2,176	Approx. 2 MB
		Low	:	Fine 2,336 X 1,568	Approx. 2.5 MB
			:	Normal 2,336 X 1,568	Approx. 1.4 MB
			:	Basic 2,336 X 1,568	Approx. 1 MB

Movie	VGA : VGA : 640 x 480 (Image area 640 x 426)
-------	--

### ISO SENSITIVITY

ISO Sensitivity	ISO 100 - ISO 6400 (1/3 steps for appropriate sensitivity) AUTO: Upper limit, lower limit setting is possible between ISO 100 - ISO 6400. When using with flash, it changes depending on the low limit setting.
-----------------	--

### EXPOSURE CONTROL

Metering System	Evaluative Metering, Center-Weighted Average Metering, Spot Metering
Exposure Control System	[ P ] Program AE(Program Shift is possible), [ S ] Shutter Speed Priority AE, [ A ] Aperture Priority AE, [ M ] Manual
Exposure Compensation	± 3EV (1/3 stop increments)
AE Lock	AE lock button
Auto Bracketing	Appropriate, under, over; 1/3EV steps up to ± 3EV for appropriate exposure

### AUTOFOCUS

Auto Focus Type	Contrast Detection Type
AF Point	9 points select mode, Free move mode (It is possible to change the size of Focus Frame to Spot, Regular and Large.)
Focus Lock	Shutter release halfway-down position (AF lock can be done by AE lock button from menu setting)
Manual Focus	Focus Ring Type

### SHUTTER

Shutter Speed	1/2000* - 30sec. (*Depending on the aperture value, shutter speed changes)
---------------	---

### DRIVE MODE

Drive Mode	Single, Continuous, Self Timer (2sec./10sec.) Interval timer, Unlimited Shooting
------------	---

### WHITE BALANCE

Settings	8 types (Auto, Daylight, Shade, Overcast, Incandescent, Fluorescent, Flash, Custom)
----------	--

### COLOR MODE

Settings	7 types (Standard, Vivid, Neutral, Portrait, Landscape, B&W, Sepia)
----------	--

### MENU

LCD Monitor Language	English / Japanese / German / French / Spanish / Italian / Chinese(Simplified) / Korean / Russian / Chinese(Traditional) / Nederlands / Polski / Português / Dansk / Svenska / Norsk / Suomi
----------------------	---

### LCD MONITOR

Type	TFT color LCD monitor
Monitor Size	3.0 inches
LCD Pixels	Approx. 920,000 Pixels

### INTERFACE

PC/IF	USB (USB2.0)
AUDIO/VIDEO	Video Out (NTSC/PAL), Audio Out (Monaural)

### POWER SOURCE

Power	Li-ion Battery BP-41, AC Adapter SAC-5 (with DC Connector CN-11) (Optional)
Battery Life	Approx. 97 (+25°C)

### DIMENSIONS AND WEIGHT

Dimensions	121.5mm/4.8in.(W), 66.7mm/2.6in.(H), 64.3mm/2.5in.(D)
Weight	360g/12.7oz(without battery and card)

The appearance, specifications and other aspects of this product are subject to change  
without notice for improvement purposes.

Note : To help with the correct and safe of this product, please read the manual carefully first.

Copyright © 2012 Sigma Corporation All Rights Reserved.

# SIGMA

SIGMA CORPORATION 2-4-16, Kurigi, Asao-ku, Kawasaki-shi, Kanagawa, 215-8530 Japan Tel: +81-44-989-7437 Fax: +81-44-989-7448 www.sigma-photo.co.jp